

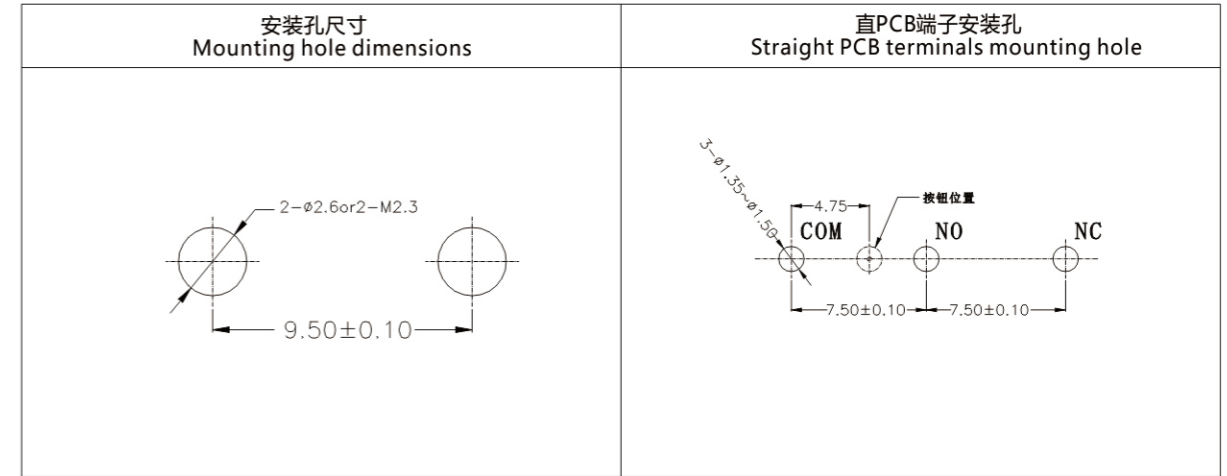
SW-3型防水开关系列 Waterproof switch series

SW-3	产品系列代码	SW-3系列
A	接触形式	A SPDT 单极双头 B SPST-NO 单极单头-常开 C SPST-NC 单极单头-常闭
01	额定负载	01 5(2)A250VAC 5A125VAC 02 3(1)A250VAC 3A125VAC 03 1(0.3)A250VAC 1A125VAC 04 0.1A250VAC 0.1A125VAC
A/01	端子类型 (字母表示) / 出线类型 (数字表示)	A 即PCB端子(0.6mm宽) B 即PCB端子(1mm宽) C 焊接端子 D 快捷端子#110 E 长即PCB端子 F 特殊端子... L 左即PCB端子 R 右即PCB端子 ... 特殊端子...
00	驱动类型	00 不带操作柄 /No lever /Pin Plunger 01 短直操作柄 02 标准直柄 03 长直操作柄 04 最长直操作柄 05 短滚弧柄 06 长滚弧柄 07 短滚弧柄 08 长滚弧柄 ... 特殊手柄 Special Lever
A	外形结构	A 标准通用型结构 B... ..
075	操作力(无操作柄)	050 50gf Max 100 100gf Max 150 150gf Max 200 200gf Max ... ..
无	温度等级	无 标准型40T85 A 40T105 B ... ..
XX	特殊设计代码	特别设计代码, 在表任印不向于常规产品的特别设计的零件, 附件如产品图样附录; 00 常规型 ... ..

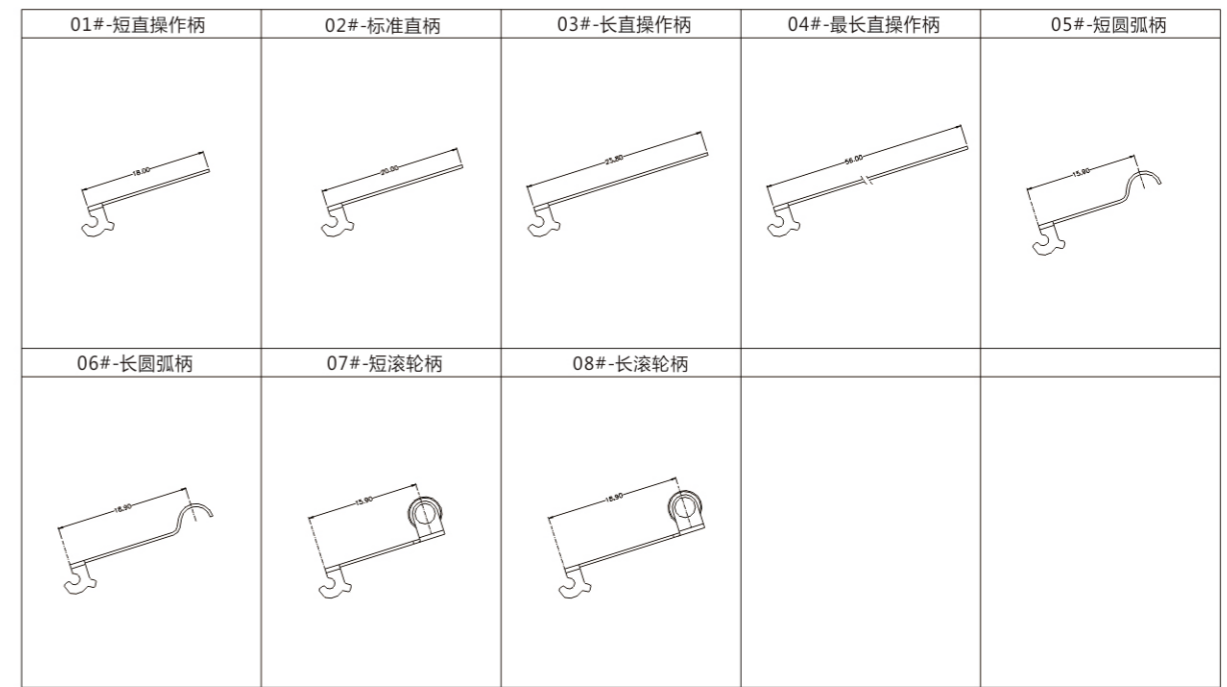
超小型防水微动开关/Subminiature Sealed Micro Switch

安装孔位置, 操作柄类型, 接触形式, 外形介绍, 端子类型  
Mounting Hole, Lever Type, Circuit, Shape, Terminal Type

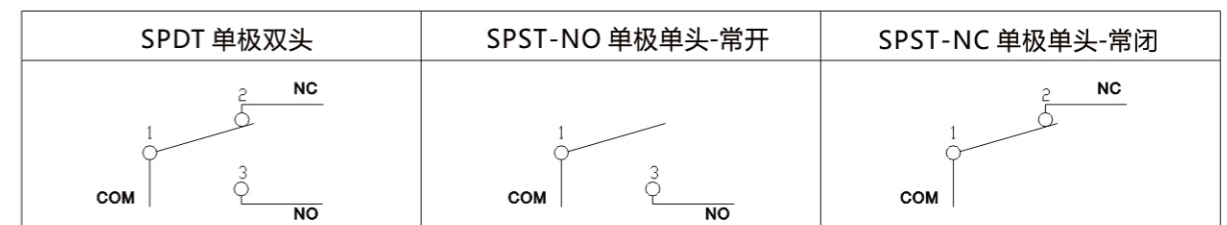
### ■ 安装孔尺寸/Mounting Hole Dimensions



### ■ 操作柄类型/Lever Type



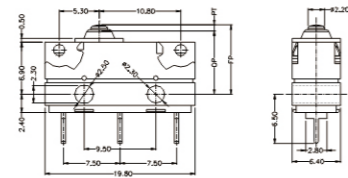
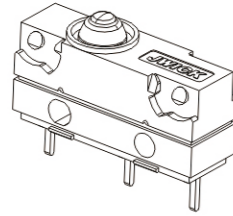
### ■ 接触型式Circuit Configuration



防水微动开关/Subminiature Sealed Micro Switch

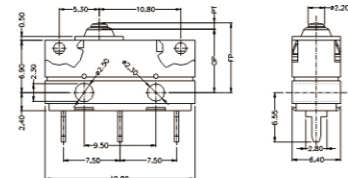
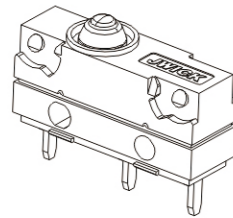
■外形尺寸和操作特性 Dimensions and Operating Characteristics

### ◆SW-3A□A00A□□□



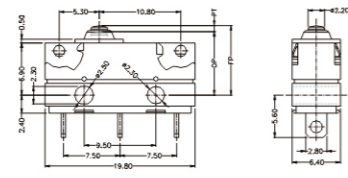
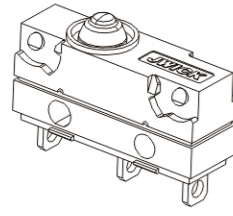
OF	RF	PT	OT	DT	FP	OP
Max(gf)	Min(gf)	Max(mm)	Min(mm)	Max(mm)	Max(mm)	(mm)
100	20	1.20	0.6	0.2	9.40	8.40±0.3
150	30	1.20	0.6	0.2	9.40	8.40±0.3
200	50	1.20	0.6	0.2	9.40	8.40±0.3

### ◆SW-3A□B00A□□□



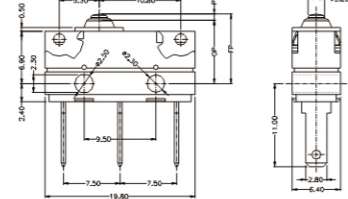
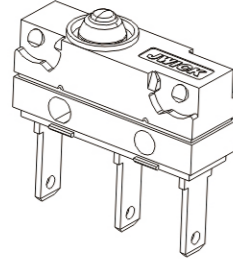
OF	RF	PT	OT	DT	FP	OP
Max(gf)	Min(gf)	Max(mm)	Min(mm)	Max(mm)	Max(mm)	(mm)
100	20	1.20	0.6	0.2	9.40	8.40±0.3
150	30	1.20	0.6	0.2	9.40	8.40±0.3
200	50	1.20	0.6	0.2	9.40	8.40±0.3

### ◆SW-3A□C00A□□□



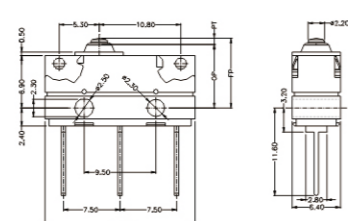
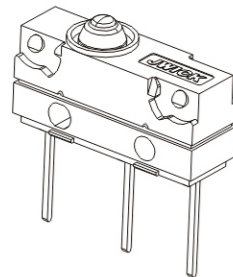
OF	RF	PT	OT	DT	FP	OP
Max(gf)	Min(gf)	Max(mm)	Min(mm)	Max(mm)	Max(mm)	(mm)
100	20	1.20	0.6	0.2	9.40	8.40±0.3
150	30	1.20	0.6	0.2	9.40	8.40±0.3
200	50	1.20	0.6	0.2	9.40	8.40±0.3

### ◆SW-3A□D00A□□□



OF	RF	PT	OT	DT	FP	OP
Max(gf)	Min(gf)	Max(mm)	Min(mm)	Max(mm)	Max(mm)	(mm)
100	20	1.20	0.6	0.2	9.40	8.40±0.3
150	30	1.20	0.6	0.2	9.40	8.40±0.3
200	50	1.20	0.6	0.2	9.40	8.40±0.3

### ◆SW-3A□E00A□□□

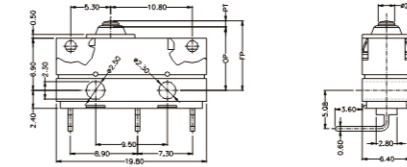
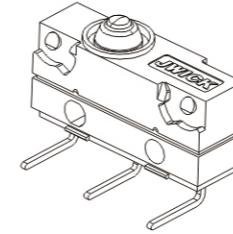


OF	RF	PT	OT	DT	FP	OP
Max(gf)	Min(gf)	Max(mm)	Min(mm)	Max(mm)	Max(mm)	(mm)
100	20	1.20	0.6	0.2	9.40	8.40±0.3
150	30	1.20	0.6	0.2	9.40	8.40±0.3
200	50	1.20	0.6	0.2	9.40	8.40±0.3

防水微动开关/Subminiature Sealed Micro Switch

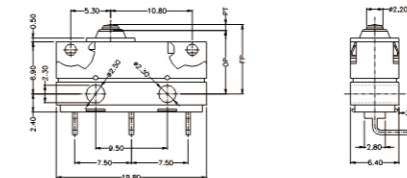
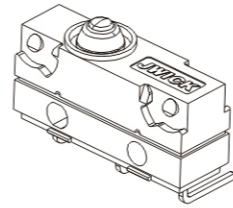
■外形尺寸和操作特性 Dimensions and Operating Characteristics

### ◆SW-3A□L00A□□□



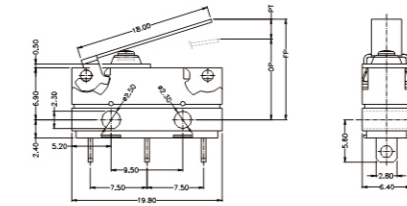
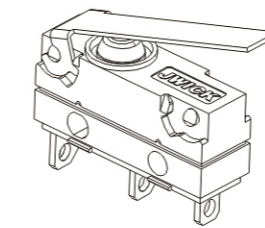
OF	RF	PT	OT	DT	FP	OP
Max(gf)	Min(gf)	Max(mm)	Min(mm)	Max(mm)	Max(mm)	(mm)
100	20	1.20	0.6	0.2	9.40	8.40±0.3
150	30	1.20	0.6	0.2	9.40	8.40±0.3
200	50	1.20	0.6	0.2	9.40	8.40±0.3

### ◆SW-3A□R00A□□□



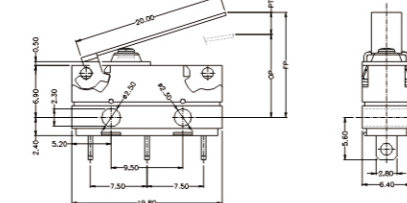
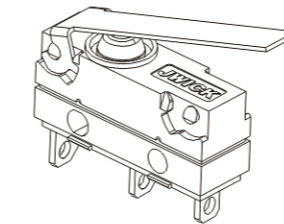
OF	RF	PT	OT	DT	FP	OP
Max(gf)	Min(gf)	Max(mm)	Min(mm)	Max(mm)	Max(mm)	(mm)
100	20	1.20	0.6	0.2	9.40	8.40±0.3
150	30	1.20	0.6	0.2	9.40	8.40±0.3
200	50	1.20	0.6	0.2	9.40	8.40±0.3

### ◆SW-3A□C01A□□□



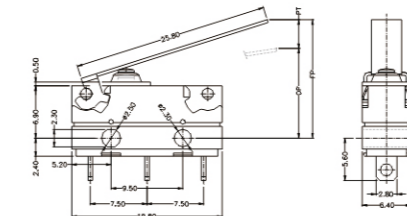
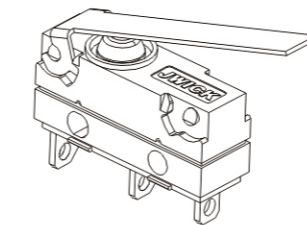
OF	RF	PT	OT	DT	FP	OP
Max(gf)	Min(gf)	Max(mm)	Min(mm)	Max(mm)	Max(mm)	(mm)
80	15	4.5	1.5	0.5	13.4	10.7±1.6
150	30	4.5	1.5	0.5	13.4	10.7±1.6
200	50	4.5	1.5	0.5	13.4	10.7±1.6

### ◆SW-3A□C02A□□□



OF	RF	PT	OT	DT	FP	OP
Max(gf)	Min(gf)	Max(mm)	Min(mm)	Max(mm)	Max(mm)	(mm)
80	15	4.5	1.5	0.6	13.8	11.0±1.5
150	30	4.5	1.5	0.6	13.8	11.0±1.5
200	50	4.5	1.5	0.6	13.8	11.0±1.5

### ◆SW-3A□C03A□□□

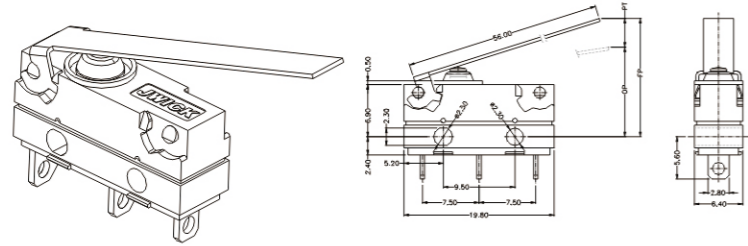


OF	RF	PT	OT	DT	FP	OP
Max(gf)	Min(gf)	Max(mm)	Min(mm)	Max(mm)	Max(mm)	(mm)
80	15	6.30	1.5	1.5	15.8	12.0±1.8
150	30	6.30	1.5	1.5	15.8	12.0±1.8
200	50	6.30	1.5	1.5	15.8	12.0±1.8

防水微动开关/Subminiature Sealed Micro Switch

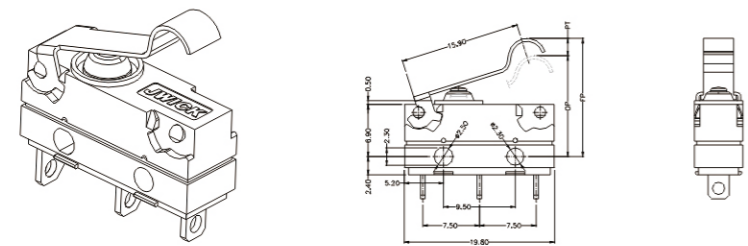
■外形尺寸和操作特性 Dimensions and Operating Characteristics

◆SW-3A□C04A130□-□



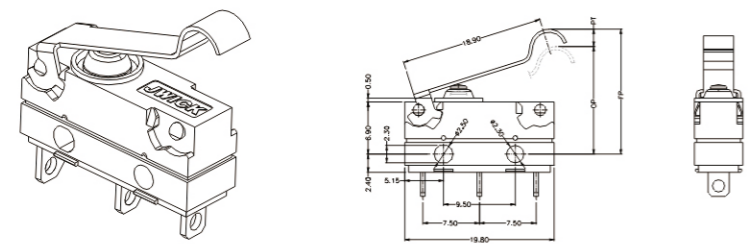
OF	RF	PT	OT	DT	FP	OP
Max(gf)	Min(gf)	Max(mm)	Min(mm)	Max(mm)	Max(mm)	(mm)

◆SW-3A□C05A□□-□



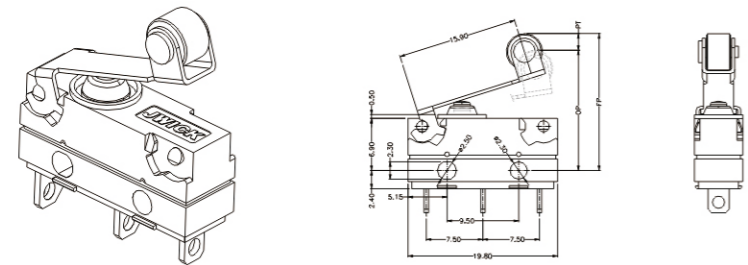
OF	RF	PT	OT	DT	FP	OP
Max(gf)	Min(gf)	Max(mm)	Min(mm)	Max(mm)	Max(mm)	(mm)
90	20	3.80	1.5	1.5	15.8	13.4±1.4
170	35	3.80	1.5	1.5	15.8	13.4±1.4
220	60	3.80	1.5	1.5	15.8	13.4±1.4

◆SW-3A□C06A□□-□



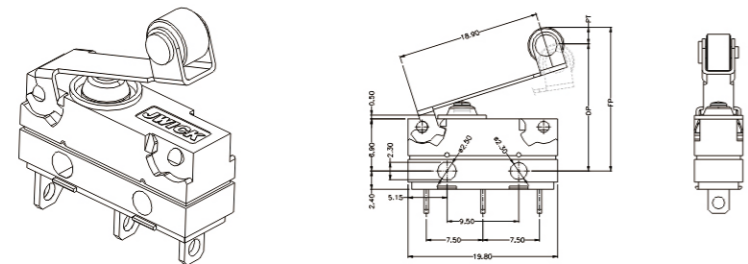
OF	RF	PT	OT	DT	FP	OP
Max(gf)	Min(gf)	Max(mm)	Min(mm)	Max(mm)	Max(mm)	(mm)
90	20	4.30	0.6	0.7	17.5	14.5±1.4
170	35	4.30	0.6	0.7	17.5	14.5±1.4
220	60	4.30	0.6	0.7	17.5	14.5±1.4

◆SW-3A□C07A□□-□



OF	RF	PT	OT	DT	FP	OP
Max(gf)	Min(gf)	Max(mm)	Min(mm)	Max(mm)	Max(mm)	(mm)
100	20	4.30	1.0	0.7	18.5	15.8±1.3
150	35	4.30	1.0	0.7	18.5	15.8±1.3
200	60	4.30	1.0	0.7	18.5	15.8±1.3

◆SW-3A□C08A□□-□

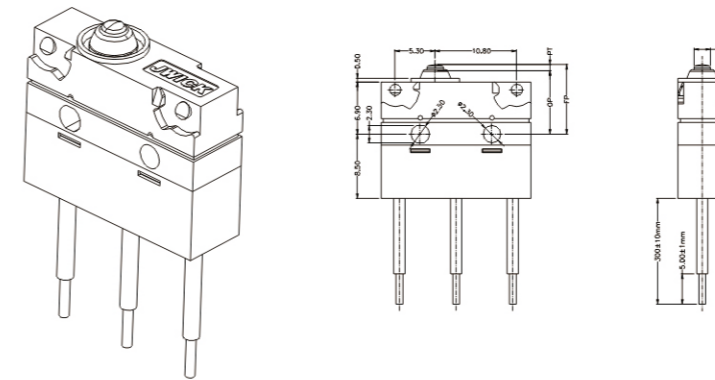


OF	RF	PT	OT	DT	FP	OP
Max(gf)	Min(gf)	Max(mm)	Min(mm)	Max(mm)	Max(mm)	(mm)
		5.30	1.0	0.7	19.5	16.8±1.3
		5.30	1.0	0.7	19.5	16.8±1.3
		5.30	1.0	0.7	19.5	16.8±1.3

防水微动开关/Subminiature Sealed Micro Switch

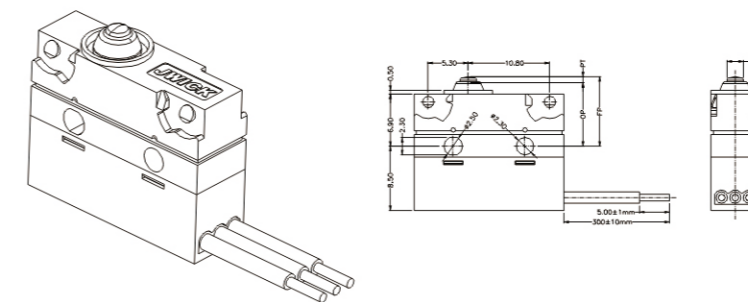
■外形尺寸和操作特性 Dimensions and Operating Characteristics

◆SW-3A□0400A□□-□



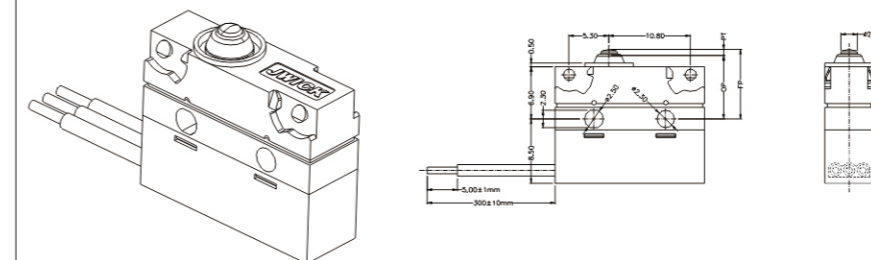
OF	RF	PT	OT	DT	FP	OP
Max(gf)	Min(gf)	Max(mm)	Min(mm)	Max(mm)	Max(mm)	(mm)
100	20	1.20	0.6	0.2	9.40	8.40±0.3
150	30	1.20	0.6	0.2	9.40	8.40±0.3
200	50	1.20	0.6	0.2	9.40	8.40±0.3

◆SW-3A□0600A□□-□



OF	RF	PT	OT	DT	FP	OP
Max(gf)	Min(gf)	Max(mm)	Min(mm)	Max(mm)	Max(mm)	(mm)
100	20	1.20	0.6	0.2	9.40	8.40±0.3
150	30	1.20	0.6	0.2	9.40	8.40±0.3
200	50	1.20	0.6	0.2	9.40	8.40±0.3

◆SW-3A□0500A□□-□



OF	RF	PT	OT	DT	FP	OP
Max(gf)	Min(gf)	Max(mm)	Min(mm)	Max(mm)	Max(mm)	(mm)
100	20	1.20	0.6	0.2	9.40	8.40±0.3
150	30	1.20	0.6	0.2	9.40	8.40±0.3
200	50	1.20	0.6	0.2	9.40	8.40±0.3