



安装孔位置, 操作柄类型, 接触形式, 外形介绍, 端子类型  
Mounting Hole, Lever Type, Circuit, Shape, Terminal Type

#### ■ 安装孔尺寸/Mounting Hole Dimensions

定位柱间距 Dimension Between Posts	直PCB端子安装孔 Straight PCB terminals mounting hole	定位柱方向识别 Posts Identification
<p>Posts with different dia. 不同直径的定位柱</p>	<p>2-ø1.35-ø1.50 5.08</p>	<p>按动位置 Plunger Position</p> <p>左侧扁定位柱LEFT</p> <p>右侧扁定位柱RIGHT</p>
<p>左右向PCB端子安装孔 Left/Right Angled PCB terminals mounting hole</p>	<p>M型安装孔 M type mounting hole</p> <p>2-ø1.35-ø1.50 4.50</p>	

#### ■ 操作柄类型/Lever Type

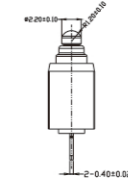
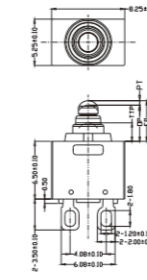
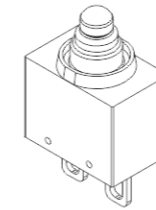
01#圆弧柄	02#圆弧柄			

#### ■ 接触型式Circuit Configuration

SPST-NO 单极单头-常开	SPST-NC 单极单头-常闭
<p>COM 1 NO 3</p>	<p>COM 1 NC 2</p>

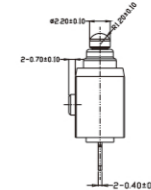
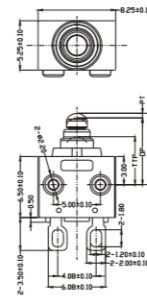
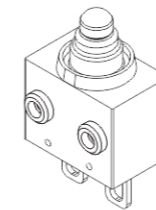
■外形尺寸和操作特性 Dimensions and Operating Characteristics

#### ◆SW-7□□C00A100-□



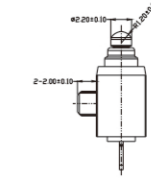
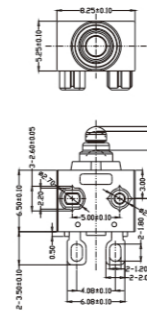
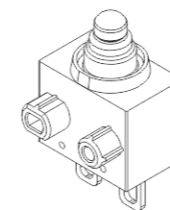
OF Max(gf)	PT Max(mm)	TTP Min(mm)	FP Max(mm)	OP (mm)
150	0.8	2.10	4.60	4.10±0.3

#### ◆SW-7□□C00B100-□



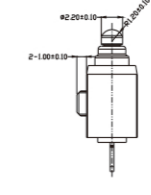
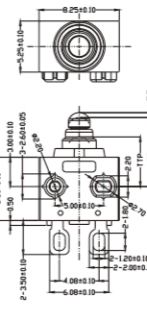
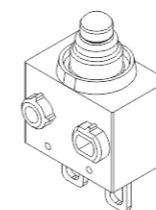
OF Max(gf)	PT Max(mm)	TTP Min(mm)	FP Max(mm)	OP (mm)
150	0.8	5.10	7.60	7.10±0.3

#### ◆SW-7□□C00E100-□



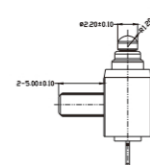
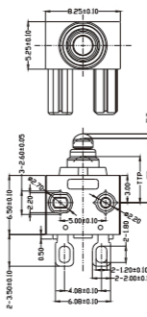
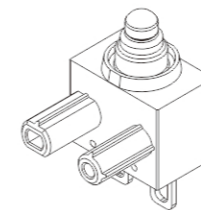
OF Max(gf)	PT Max(mm)	TTP Min(mm)	FP Max(mm)	OP (mm)
150	0.8	5.10	7.60	7.10±0.3

#### ◆SW-7□□C00N100-□



OF Max(gf)	PT Max(mm)	TTP Min(mm)	FP Max(mm)	OP (mm)
150	0.8	5.10	7.60	7.10±0.3

#### ◆SW-7□□C00K100-□

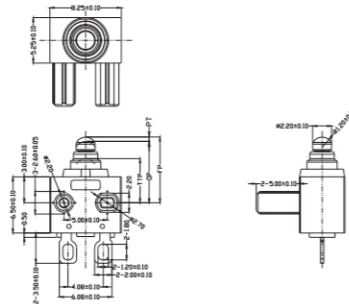
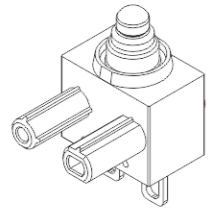


OF Max(gf)	PT Max(mm)	TTP Min(mm)	FP Max(mm)	OP (mm)
150	0.8	5.10	7.60	7.10±0.3

超小型防水检测开关/Subminiature Sealed detector switch

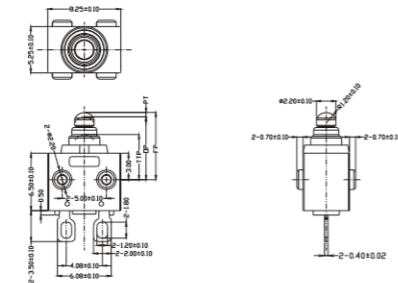
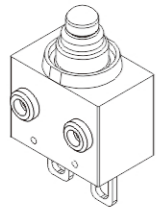
■外形尺寸和操作特性 Dimensions and Operating Characteristics

### ◆SW-7□□C00H100-□



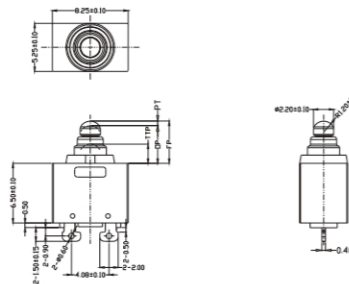
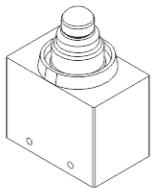
OF	PT	TTP	FP	OP
Max(gf)	Max(mm)	Min(mm)	Max(mm)	(mm)
150	0.8	5.10	7.60	7.10±0.3

### ◆SW-7□□C00C100-□



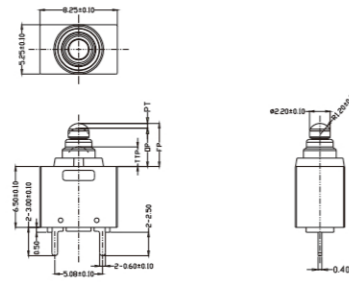
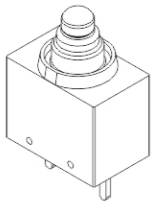
OF	PT	TTP	FP	OP
Max(gf)	Max(mm)	Min(mm)	Max(mm)	(mm)
150	0.8	5.10	7.60	7.10±0.3

### ◆SW-7□□D00A100-□



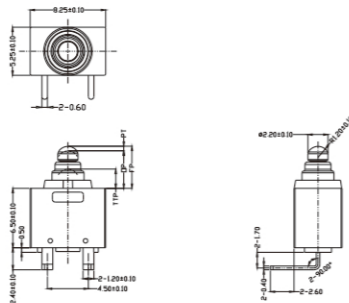
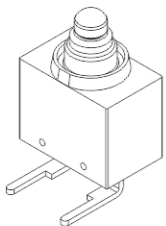
OF	PT	TTP	FP	OP
Max(gf)	Max(mm)	Min(mm)	Max(mm)	(mm)
150	0.8	2.10	4.60	4.10±0.3

### ◆SW-7□□A00A100-□



OF	PT	TTP	FP	OP
Max(gf)	Max(mm)	Min(mm)	Max(mm)	(mm)
150	0.8	2.10	4.60	4.10±0.3

### ◆SW-7□□E00A100-□

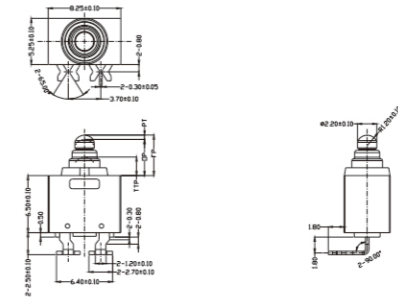
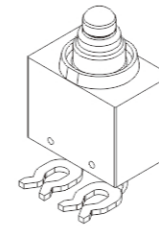


OF	PT	TTP	FP	OP
Max(gf)	Max(mm)	Min(mm)	Max(mm)	(mm)
150	0.8	2.10	4.60	4.10±0.3

超小型防水检测开关/Subminiature Sealed detector switch

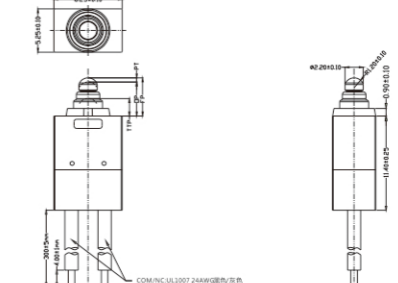
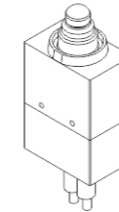
■外形尺寸和操作特性 Dimensions and Operating Characteristics

### ◆SW-7□□F00A100-□



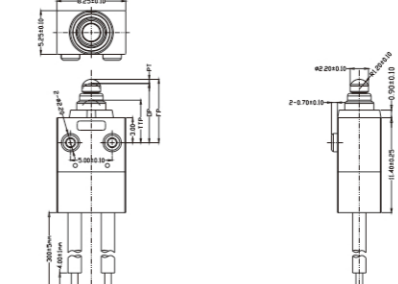
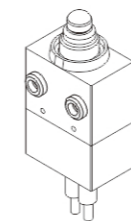
OF	PT	TTP	FP	OP
Max(gf)	Max(mm)	Min(mm)	Max(mm)	(mm)
150	0.8	2.10	4.60	4.10±0.3

### ◆SW-7□□0100A100-□



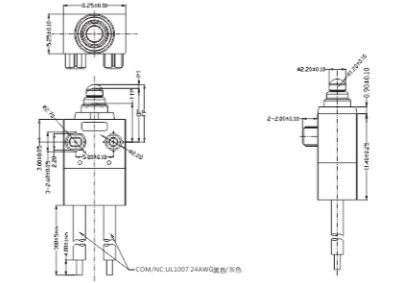
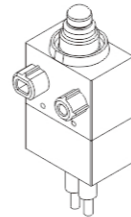
OF	PT	TTP	FP	OP
Max(gf)	Max(mm)	Min(mm)	Max(mm)	(mm)
150	0.8	2.10	4.60	4.10±0.3

### ◆SW-7□□0100B100-□



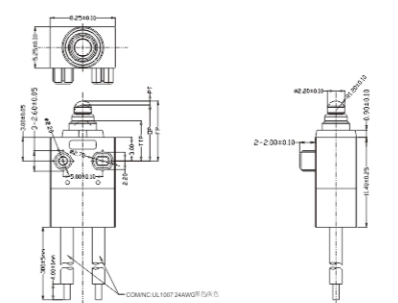
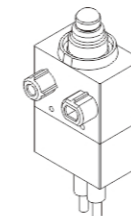
OF	PT	TTP	FP	OP
Max(gf)	Max(mm)	Min(mm)	Max(mm)	(mm)
150	0.8	5.10	7.60	7.10±0.3

### ◆SW-7□□0100E100-□



OF	PT	TTP	FP	OP
Max(gf)	Max(mm)	Min(mm)	Max(mm)	(mm)
150	0.8	5.10	7.60	7.10±0.3

### ◆SW-7□□0100F100-□

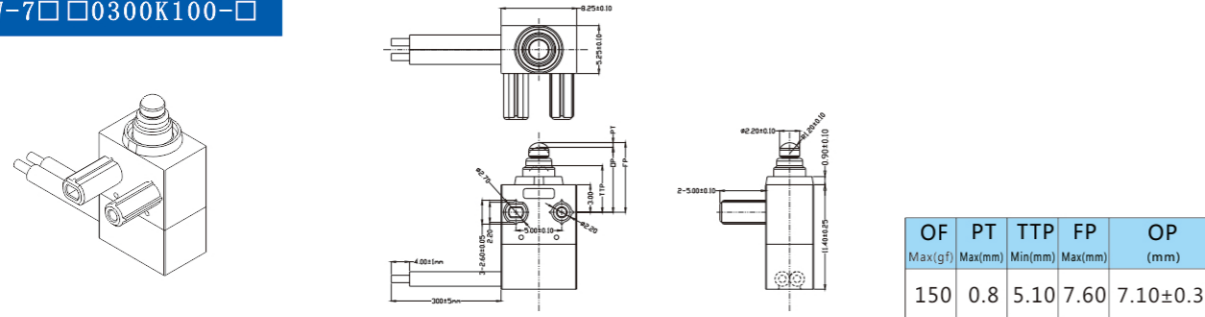


OF	PT	TTP	FP	OP
Max(gf)	Max(mm)	Min(mm)	Max(mm)	(mm)
150	0.8	5.10	7.60	7.10±0.3

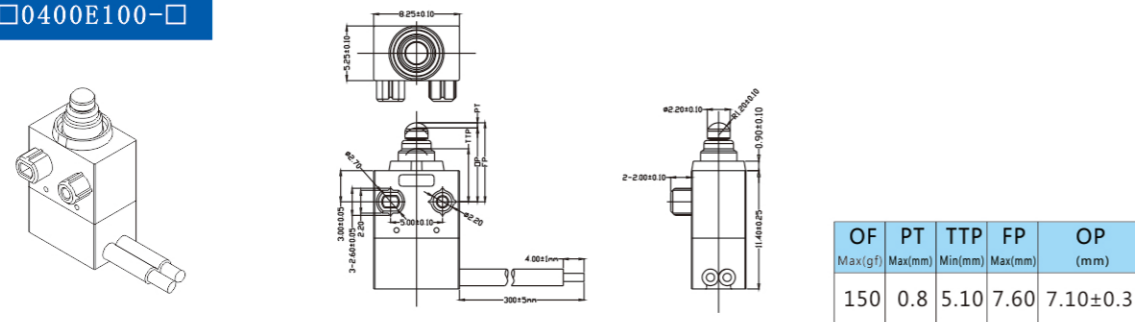
超小型防水检测开关/Subminiature Sealed detector switch

■外形尺寸和操作特性 Dimensions and Operating Characteristics

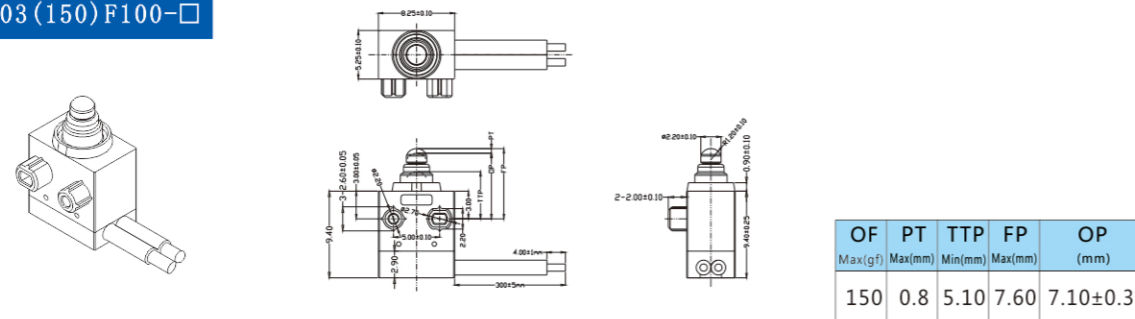
### ◆SW-7□□0300K100-□



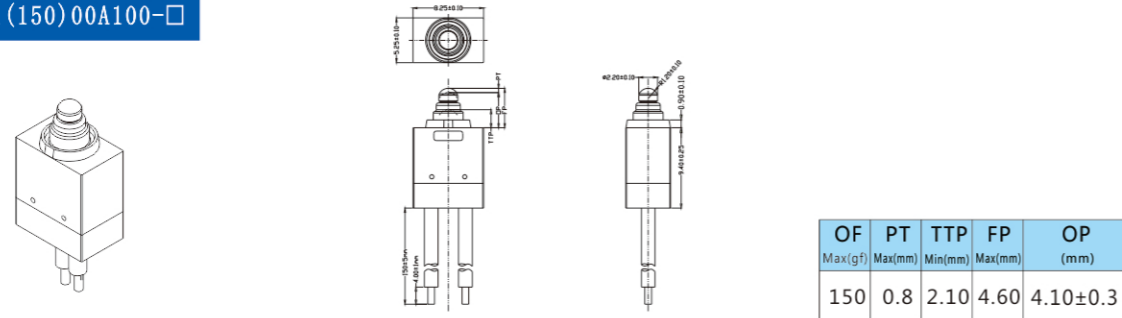
### ◆SW-7□□0400E100-□



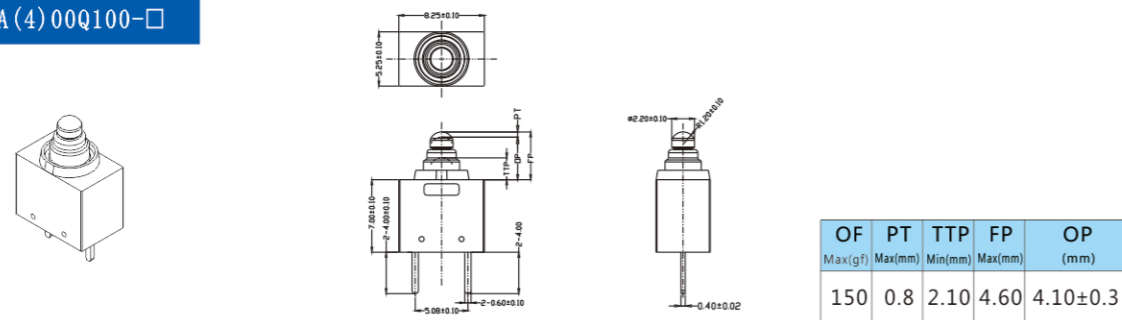
### ◆SW-7□□03(150)F100-□



### ◆SW-7□□01(150)00A100-□



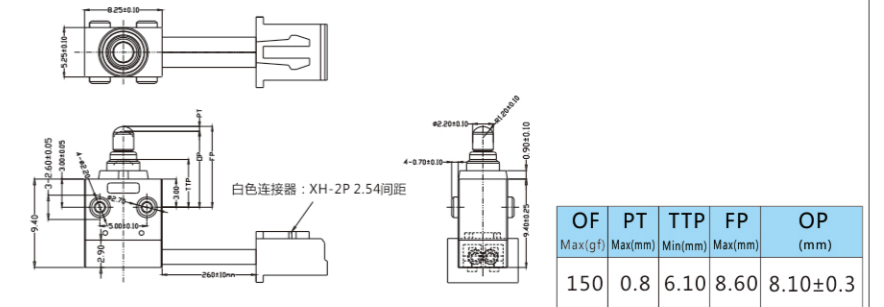
### ◆SW-7□□A(4)00Q100-□



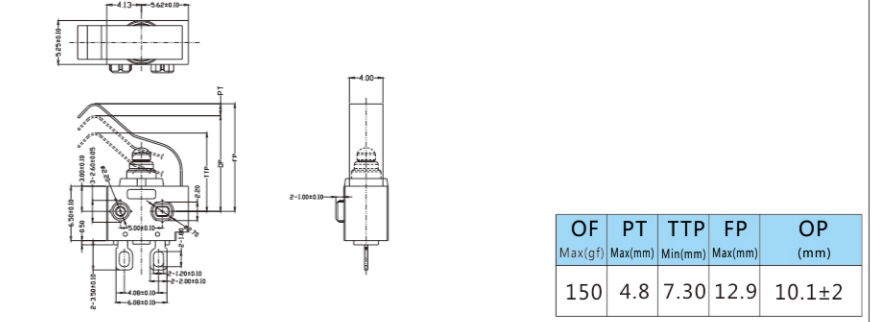
超小型防水检测开关/Subminiature Sealed detector switch

■外形尺寸和操作特性 Dimensions and Operating Characteristics

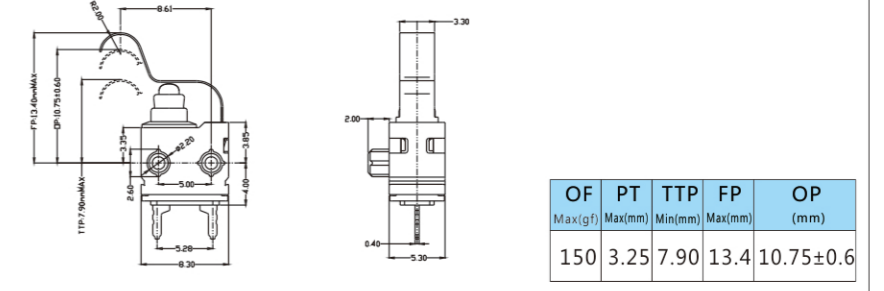
### ◆SW-7□□31(260)00C100-9



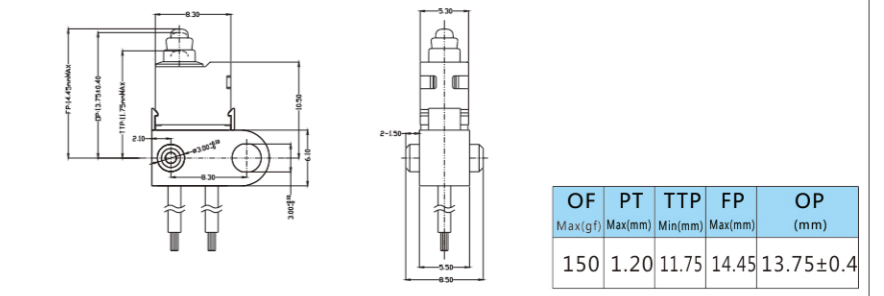
### ◆SW-7□□C01N100-□



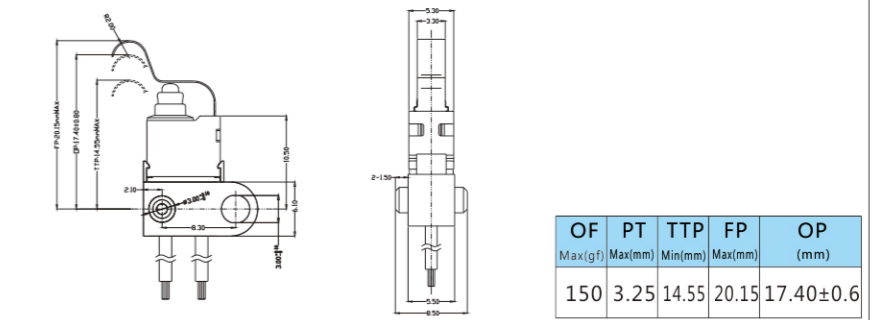
### ◆新产品



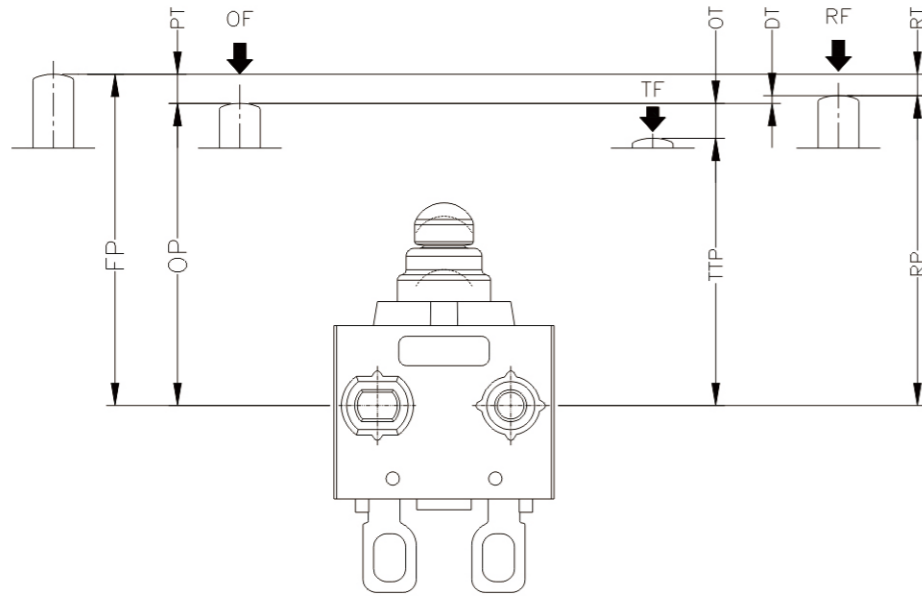
### ◆新产品



### ◆新产品



■开关动作特性图解/Operating Characteristic Diagrammatize



代号 Code	参数名称 Name	含义 Meanings
PT	动作行程(预行程) Pre travel	驱动件从自由位置到动作位置间的位移 The displacements of actuator from free position to operating position.
OT	超行程 Over travel	驱动件从动作位置到全行程位置间的位移 The displacements of actuator from operating position to total travel position.
OF	动作力 Operating force	驱动件从自由位置到动作位置所必须的最大操作力 The max. force of displacements of actuator from free position to operating position.
TF	全行程力 Total travel force	驱动件在全行程位置所承受的最小操作力 The smallest force of displacements of actuator on total travel position.
TTP	全行程位置 Total travel position	驱动件被止动时所处的位置 The position where the actuator be stopped.
OP	动作位置 Operating position	驱动件在瞬动机构发生正向动作瞬间所处的位置 The position where the actuator moved obverse on snap-action parts.
FP	自由位置 Free position	驱动件在不承受操作力以及力不足以引起位移时所处的位置 The position where the actuator lead the displacements when its out of force is not enough.

■特点/Features

- ◆防水防尘(IP67)设计/Designed Water and Dust Tight(IP67)
- ◆体型小巧，结构紧凑/Small Compact Size
- ◆长寿命，高可靠性/Long Life and High Reliability
- ◆配备各种形式的操作柄/Variety of Levers
- ◆接线端子种类齐全/Wide range of Wiring Terminals
- ◆广泛应用于汽车控制，家电控制，工业控制领域  
Widely used in Automotive Electronics,Appliance and Industrial Control etc.
- ◆多种安装外形尺寸满足不同的安装要求/Customized Designs

■应用/Application

- ◆汽车/Car
- ◆空调/Air-Conditioner
- ◆通信/Communication
- ◆电动牙刷/Electric Tooth Brush
- ◆玩具/Toys
- ◆家用电器/Home Appliance
- ◆电机控制器/Motor Control

■特性参数/Parameters

额定值/Rating		0.1A 125/250VAC;3A 12VDC;0.1A48VDC;μ1E5
操作频率/ Operating Frequency	电器/Electrical	0.1A-120次/分,3A-10~30次/分cycles/minute
	机械/Mechanical	120次/分cycles/minute
触点电阻(初始值)/Contact Resistance(Initiative)		100mΩ Max.(不带线型/without wire type)
绝缘电阻/Insulation Resistance(at 500VDC)		100MΩ Min.
抗振动/Vibration Durability		10-55Hz,位移/move0.75mm(p-p)
抗电强度/Dielectric Strength		500VAC ( 50-60Hz )
保存温度/Storage Temperature		-40°C ~ +85°C
保存湿度/Storage Humidity		85%RH Max
寿命/Service life	电器/Electrical	Min.100,000次/cycles(取决于具体型号/Depend on part No.)
	机械/Mechanical	Min.500,000次/cycles